

Name \_\_\_\_\_ Date \_\_\_\_\_

***Amelia Bedelia***  
***Goes Back to School***  
by Herman Parish  
**Vocabulary Word Unscramble**

**Unscramble the words, using the textbox to help you.**

|          |            |         |            |           |           |         |
|----------|------------|---------|------------|-----------|-----------|---------|
| problems | erased     | younger | favorite   | cafeteria | subject   | dizzy   |
| school   | playground | serving | chalkboard | reading   | different | welcome |

1. oervtfai \_\_\_\_\_
2. mcewelo \_\_\_\_\_
3. lempsrob \_\_\_\_\_
4. racahdoklb \_\_\_\_\_
5. rntedffei \_\_\_\_\_
6. oocslh \_\_\_\_\_
7. eeicfatar \_\_\_\_\_
8. seerda \_\_\_\_\_
9. irgnsev \_\_\_\_\_
10. iangrde \_\_\_\_\_
11. zydiz \_\_\_\_\_
12. cbtujse \_\_\_\_\_
13. urpdognlay \_\_\_\_\_
14. nuyroge \_\_\_\_\_



Name \_\_\_\_\_ Date \_\_\_\_\_

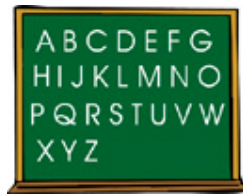
**Amelia Bedelia  
Goes Back to School**

by Herman Parish

**Word Search Puzzle**

Find the words.

q x b e m e p z r b c k a m p  
n w d j e r a s e d q w h v l  
t g l u s d i f f e r e n t a  
r c p h s v n l g j p l o g y  
d i z z y t t i a p q c m j g  
p r o b l e m s v y c o e s r  
j c q y o u n g e r n m a u o  
e l v m d c h a n c t e s b u  
s e a t s p k l p g r n v j n  
o m h c a f e t e r i a s e d  
f l e p n a l d g q k t p c r  
m j c h a l k b o a r d v t b



|            |           |        |            |         |
|------------|-----------|--------|------------|---------|
| cafeteria  | different | erased | playground | subject |
| chalkboard | dizzy     | messy  | problems   | welcome |
| circle     | dust      | paint  | seats      | younger |

Name \_\_\_\_\_ Date \_\_\_\_\_

***Amelia Bedelia  
Goes Back to School***

by Herman Parish

**Working with Words**

**Complete the sentences using a word from the textbox.**

|            |           |        |         |            |
|------------|-----------|--------|---------|------------|
| playground | spend     | messy  | seats   | dizzy      |
| younger    | cafeteria | circle | welcome | chalkboard |

1. Alex asked Amelia Bedelia to \_\_\_\_\_ the day at school.
2. Miss Wilson asked them to take their \_\_\_\_\_.
3. Miss Wilson told Amelia Bedelia that she was \_\_\_\_\_ to stay at school.
4. Amelia Bedelia asked Miss Wilson if she should take her seat to the \_\_\_\_\_.
5. After arithmetic, the children erased the \_\_\_\_\_.
6. The \_\_\_\_\_ was serving hot dogs.
7. Amelia Bedelia said it would be less \_\_\_\_\_ to paint a picture of the children.
8. Miss Wilson asked Amelia Bedelia to join their reading \_\_\_\_\_.
9. Amelia Bedelia was getting \_\_\_\_\_ trying to read the book while walking in a circle.
10. Amelia Bedelia told Mrs. Wilson that she would come back to school when she was \_\_\_\_\_.

Name \_\_\_\_\_ Date \_\_\_\_\_

***Amelia Bedelia***  
***Goes Back to School***  
by Herman Parish  
**Comprehension**

**Answer the questions in complete sentences.**

1. Why did Amelia Bedelia spend the day at school? \_\_\_\_\_

\_\_\_\_\_  
\_\_\_\_\_

2. Why did Miss Wilson tell Amelia Bedelia to paint a picture of the children? \_\_\_\_\_

\_\_\_\_\_  
\_\_\_\_\_

3. Why did Amelia Bedelia get dizzy at school? \_\_\_\_\_

\_\_\_\_\_  
\_\_\_\_\_

4. What was Maria's favorite subject at school? \_\_\_\_\_

\_\_\_\_\_  
\_\_\_\_\_

5. What did Amelia Bedelia do when Miss Wilson told them to take their seats? \_\_\_\_\_

\_\_\_\_\_  
\_\_\_\_\_

6. What did Amelia Bedelia tell Miss Wilson when she asked her if she would be coming back to school the next day?

\_\_\_\_\_  
\_\_\_\_\_

7. Would you like Amelia Bedelia to spend the day with you at your school? Why or why not? \_\_\_\_\_

\_\_\_\_\_  
\_\_\_\_\_

Name \_\_\_\_\_ Date \_\_\_\_\_

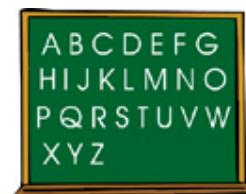
***Amelia Bedelia***  
***Goes Back to School***

by Herman Parish

**It's a Quiz!**

**Read each of the following. Circle true or false.**

1. Amelia Bedelia went to school to teach Miss Wilson's class.  
**true            false**
  
2. Miss Wilson told the students to take their seats because it was time for lunch.  
**true            false**
  
3. Amelia Bedelia told the children to be still because she was trying to paint them.  
**true            false**
  
4. Amelia Bedelia wanted to take her seat to the cafeteria.  
**true            false**
  
5. Amelia Bedelia told Miss Wilson that she should not give the children any problems because they were being good.  
**true            false**
  
6. Amelia Bedelia said they should serve the hot dogs a cool drink of water.  
**true            false**
  
7. Amelia Bedelia tried to put her eyes on the chalkboard.  
**true            false**
  
8. Amelia Bedelia got dizzy when she was trying to paint the children.  
**true            false**



***Amelia Bedelia***  
***Goes Back to School***

by Herman Parish

**Answer Key**

**Reading Level 2.6**

- Page 1:
- |    |            |     |            |
|----|------------|-----|------------|
| 1. | favorite   | 8.  | erased     |
| 2. | welcome    | 9.  | serving    |
| 3. | problems   | 10. | reading    |
| 4. | chalkboard | 11. | dizzy      |
| 5. | different  | 12. | subject    |
| 6. | school     | 13. | playground |
| 7. | cafeteria  | 14. | younger    |

- Page 3:
- |    |            |     |           |
|----|------------|-----|-----------|
| 1. | spend      | 6.  | cafeteria |
| 2. | seats      | 7.  | messy     |
| 3. | welcome    | 8.  | circle    |
| 4. | playground | 9.  | dizzy     |
| 5. | chalkboard | 10. | younger   |

- Page 4:
1. Alex asked Amelia Bedelia to spend the day at school.
  2. Amelia Bedelia was trying to paint the children instead of painting a picture of the children.
  3. Amelia Bedelia got dizzy because she was trying to read the book while she was walking in a circle.
  4. Arithmetic was Maria's favorite subject.
  5. Amelia Bedelia picked up her seat and asked Miss Wilson if she should take it out to the playground.
  6. Amelia Bedelia told Miss Wilson that she wouldn't come back to school the next day because she needed to help Mrs. Rogers and that she needed some rest.
  7. Answers will vary.

- Page 5:
- |    |       |    |       |
|----|-------|----|-------|
| 1. | false | 5. | true  |
| 2. | false | 6. | true  |
| 3. | true  | 7. | true  |
| 4. | false | 8. | false |